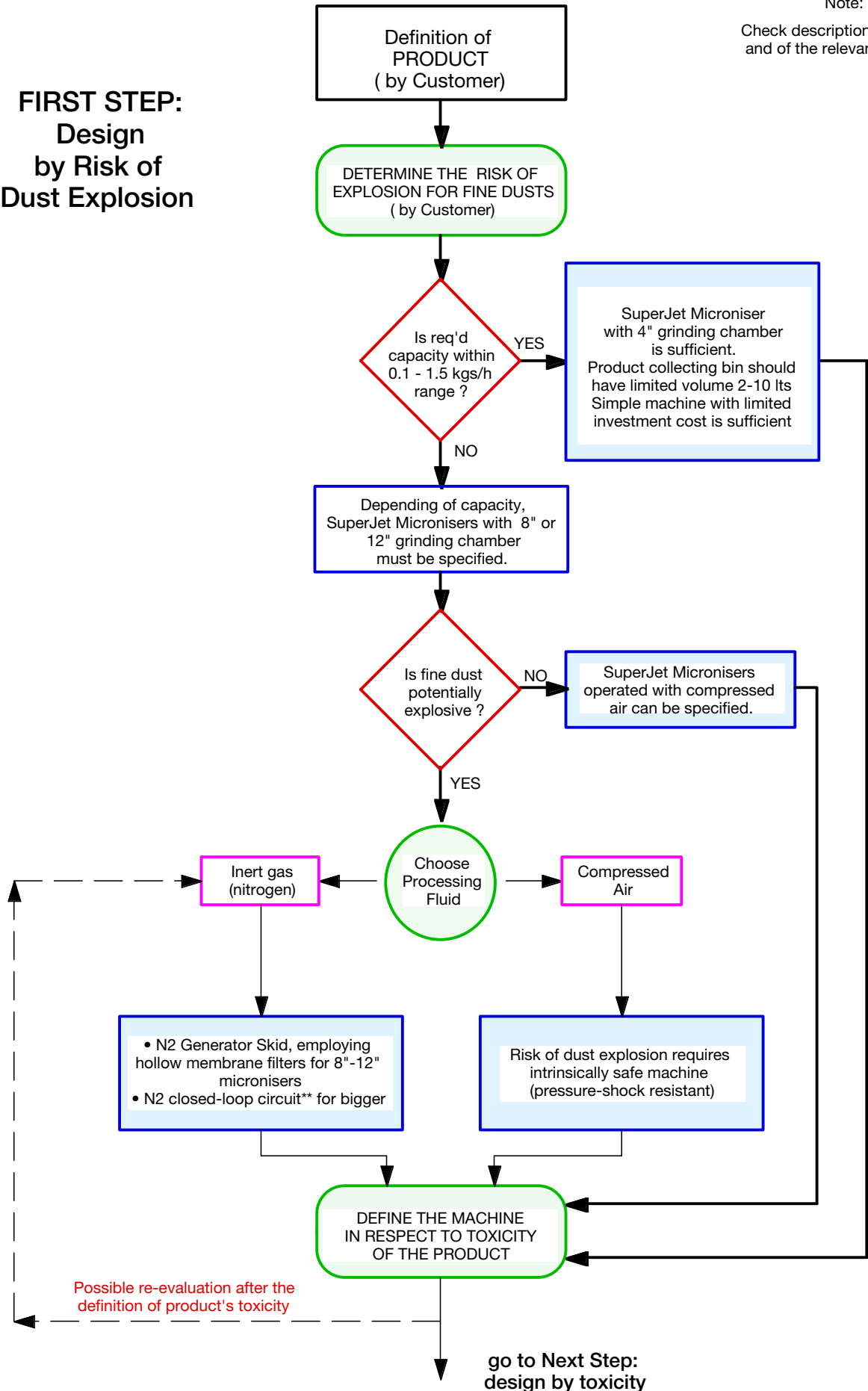


**FIRST STEP:
Design
by Risk of
Dust Explosion**

Note: ☐

Check description of machine
and of the relevant options



Note: The choice of Nitrogen-inerted systems can be determined by the construction of machine in respect to the product toxicity.
Nitrogen generator skids are strongly recommended for toxic products, where Isopak-series must be employed

Note: ☐

Check description of machine
and of the relevant options

SECOND STEP: Design by Product's toxicity

